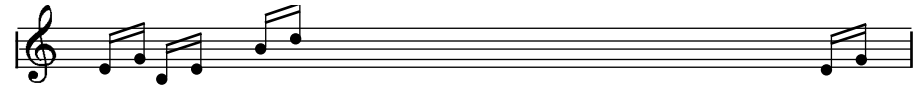


Creek OBH-22



Operating Instructions



Thank you for purchasing the OBH-22 Infra-red remote control passive Pre-Amp.

You are now in possession of a State of the Art product. The functions and operation of the OBH-22 are extremely simple. However, the following notes are provided to explain all aspects of its design and use.

OVERVIEW

The function of the OBH-22 is to provide input selection and volume adjustment to your Hi-Fi system from your armchair, via infra-red remote control.

The unit consists of a high quality motorised volume potentiometer, and two stereo relays which select the desired input and tape output, together with a muting relay that can short the signals to ground. A built-in micro-controller decodes the infra-red signals transmitted by the handset and translates them into commands which activate the motorised potentiometer and the muting and input selection relays. After each operation, the micro-controller turns itself off to avoid any possibility of interfering with the main music signal. LED's are used to indicate the status and mode of operation.

The OBH-22 is purely passive and does not introduce any gain or distortion into the signal path. It is therefore suitable to be used as a control Pre-Amp, provided the sensitivity of the power amp that is being used is high enough to be driven directly from the source. i.e. CD or Tuner etc.



ARC53 Remote Handset



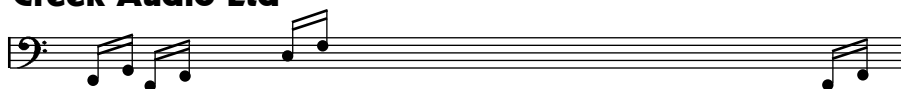
CREEK OBH-22 SPECIFICATION

| | |
|-------------------------|-------------------------------------|
| INPUT IMPEDANCE | < 20 k Ω |
| OUTPUT IMPEDANCE | 0 - 20 k Ω |
| SEPARATION | > 80 dB's @ 1kHz |
| ATTENUATION | 0 - 90 dB's |
| INPUTS | 3 Stereo pairs, inc Tape |
| OUTPUTS | 2 Stereo pairs, 1 fixed, 1 variable |
| RELAY MUTING FACTOR | > 90dB's |
| POWER REQUIREMENTS | 24v @ 60 mA |
| POWER CONSUMPTION | 2W max |
| DC CONNECTOR TYPE | 2.1 mm female DC jack |
| INPUT & MUTE INDICATION | 2 LED |
| SIZE | 150 x 100 x 66 mm |
| | 6" x 4" x 2 1/2" |
| WEIGHT | 610 g, 1.3 lb |

Creek Audio Ltd reserves the right to change or modify the specification of its products without prior warning.

Designed and made in the UK.

Creek Audio Ltd



12 Avebury Court, Mark Road, Hemel Hempstead HP2 7TA, England
Telephone: +44 (0) 1442 260146 Fax: +44 (0) 1442 243766
E-mail: info@creekaudio.com Web: www.creekaudio.com

The volume control can be operated manually at any time, whether the OBH-22 is powered or not, but without power only Line 1 can be utilised.

MAINS CONNECTION



When unpacking the module please keep the packing material in a safe place for possible future use. In the pack there is a separate mains adaptor, prepared for the mains voltage supply in the country of use. The plug at the end of the fixed cable should be firmly inserted into the connector on the OBH-22 rear panel marked "DC inlet". Remember, do not overload the mains wall socket with too many

plugs or adaptors. If in doubt, please contact your supplying dealer or a qualified electrician. The OBH-22 draws less than 2 Watts of power from the mains under all conditions so it can safely be left switched on without significantly increasing your electricity bill.

INPUT AND OUTPUT CONNECTIONS

Line 1 and 2 are identical. The output from a CD, Tuner, AV or from an OBH-15 or OBH-18 phono pre-amp can be connected to either of them. For tape machines, use the Tape input and output - the tape monitor function will allow recordings to be made and played back. The output from the OBH-22 should be connected to a power amplifier with suitable sensitivity (gain). Remember, the OBH-22 will not increase the signal from input to output.

VOLUME LEVEL

The volume control is used to alter the relative level of the sound output from the amplifier. It is important to realise that the volume control only acts to reduce, or attenuate, the incoming signal to the power amplifier stage. The maximum power of an amplifier is available only if the level of signal available from line level equipment is sufficient to drive it to clipping, which will be different from one amplifier to another. The volume control is therefore also used to balance the level from one piece of equipment to another.

If it is found necessary to have the volume control set to a position which is considered to be high before the desired level of volume is obtained, it does not necessarily mean that the amplifier is having to work too hard or "flat-out". Consult your dealer if you need more advice. Always have the volume control set at minimum (counter-clockwise) when switching your amplifier on and off, to avoid thumps or sudden loud noises.

POSITIONING OF THE OBH-22

The OBH-22 needs to be powered from its adaptor to operate the volume, input and mute functions via the remote control. It will work best if placed on a suitable hard surface or Hi-Fi equipment cabinet. Should it be necessary to place the OBH-22 on the top of other audio or video equipment, avoid obstructing any ventilation slots that could cause overheating, or internal mains transformers which might induce hum pick-up. Very heavy signal interconnects may cause the OBH-22 to tip backwards. There are two slots on the bottom that could be used to lock it in position. Do not obstruct the IR sensor on the front panel.

OPERATING THE OBH-22 BY REMOTE CONTROL

The OBH-22 has three line inputs including tape, which can be selected either from the front panel buttons or remote handset. The appropriate LED above each button will indicate which one is selected. Volume level can be adjusted manually from the control knob on the front panel or by using the up and down buttons on the remote handset. Remote volume changes will cause the input indicator LED to flash.

Pressing the Mute button on the front panel or remote handset will short the signal to ground and the LED indicator will light above the button. To un-mute, press the Mute button again or the volume up button (volume down will not un-mute the signal). To un-mute the OBH-22 without the handset, remove the power supply for 10 secs. To select the tape player or to monitor a tape recording press button 'Tape 1'. The LED indicator will light. Press button 'Tape 1' again to switch this off. All other buttons on the handset are reserved for other Creek remote controlled products.

CAUTION

Your OBH-22 amplifier is designed to give you years of reliable use. However, it is necessary to take care of your possession, so never overheat and only use the recommended Creek OBH 1 power supply.

The OBH-22 is designed to comply with European EMC requirements. However, it should be noted that it is not possible to guarantee faultless operation of the equipment if it is used close to the source of high powered radio transmissions, such as can be found in mobile telephones or CB radio etc. Care should also be taken to place it away from the source of mains interference caused by mains transformers in other equipment. Electrical switching noises from domestic or industrial heating systems, conducted periodically down the mains supply, can sometimes be amplified and present themselves as a click or a thump through a Hi-Fi system.

If you suspect that a fault has developed, do not remove the cover plate. There are no user serviceable parts inside. If you are unfortunate enough to need service work carried out on the OBH-22, it should be returned to your dealer for his expert help, in the original packing material if possible.